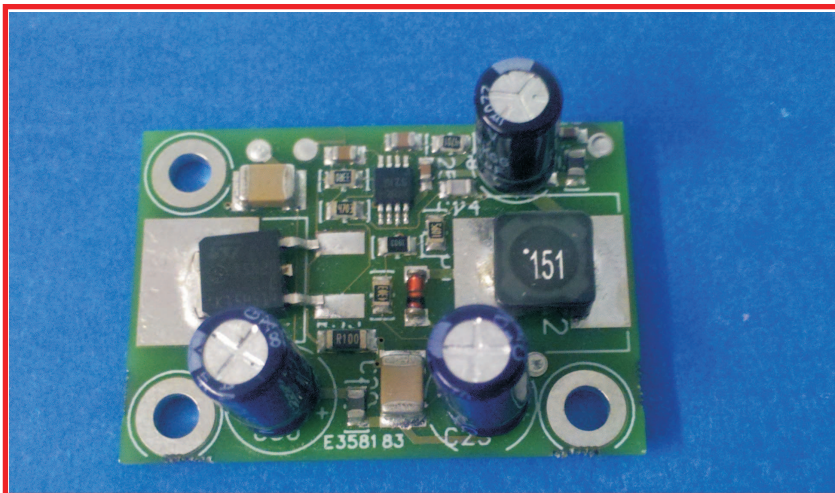
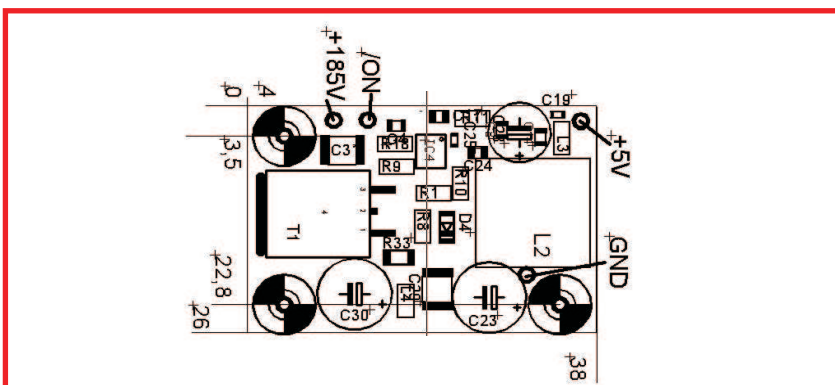


DC/DC Converter



Dimensions



Description

DC/DC Stepup switcher 5 to 185V for up to 40 Braille cells (80 when a significant slower movement is accepted when many dots change at the same time or Vin is greater 9V))

Via the /ON Pin the DC/DC can be activated. Low switch the HV on, to switch of a voltage of at least 3V is needed. Do not let this pin unconnected.

Because of the nature of a step Up DC/DC Switcher Uin - 0,7V without current limit is on the output even when the HV is switched off

Data

Uin: 5V+-5% max 500mA; Input Range: 4,75V...13,4V

Uout: 185V+-5% 4mA

Size: 26mm x 38mm PCB thickness 1,6mm assembling hight 13mm (Cs)

Connections:

+5V Uin

GND for Input and output

+185V Output

/ON On/Off control (Low switches the HV on; 0..5V;
3,3V Logic levels)